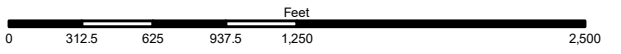
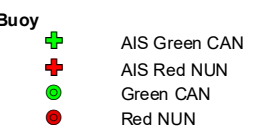
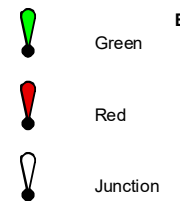
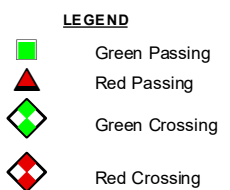
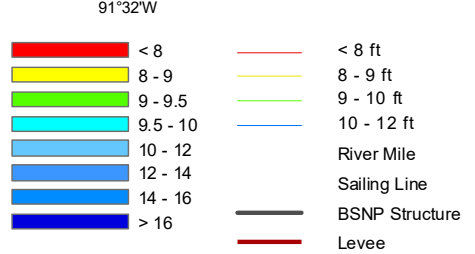
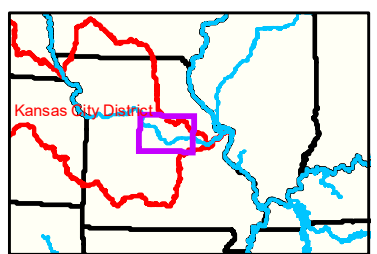


Notes

Gage_U

Hermann Gage = 11.89 at time of collection 05 April 2021"



NOTES:
 Horizontal Coordinate System:
 World Geodetic System of 1984 (WGS84), projected to the
 Universal Transverse Mercator (UTM) Zone 15 North.
 Distance units in U.S. Survey Feet
 Vertical Datum:
 Soundings are shown in feet and indicated depths
 are referenced to water surface at time of collection.
 The information depicted on this map represents the results of a survey
 conducted on the date indicated and can only be considered to
 represent the general condition existing at that time.
 The location of navigation aids are based on and provided by
 the U.S. Coast Guard.



Disclaimer: The U.S. Army Corps of Engineers makes no warranty, express or implied, for the use of the information contained herein for any purpose other than that for which it was originally intended. The user assumes all liability for any use of the information contained herein for any purpose other than that for which it was originally intended. The U.S. Army Corps of Engineers makes no warranty, express or implied, for the use of the information contained herein for any purpose other than that for which it was originally intended. The user assumes all liability for any use of the information contained herein for any purpose other than that for which it was originally intended.

KANSAS CITY DISTRICT MISSOURI RIVER AREA OFFICE	
Submitted by:	MRAO
Reviewed by:	MRAO
Approved by:	MRAO

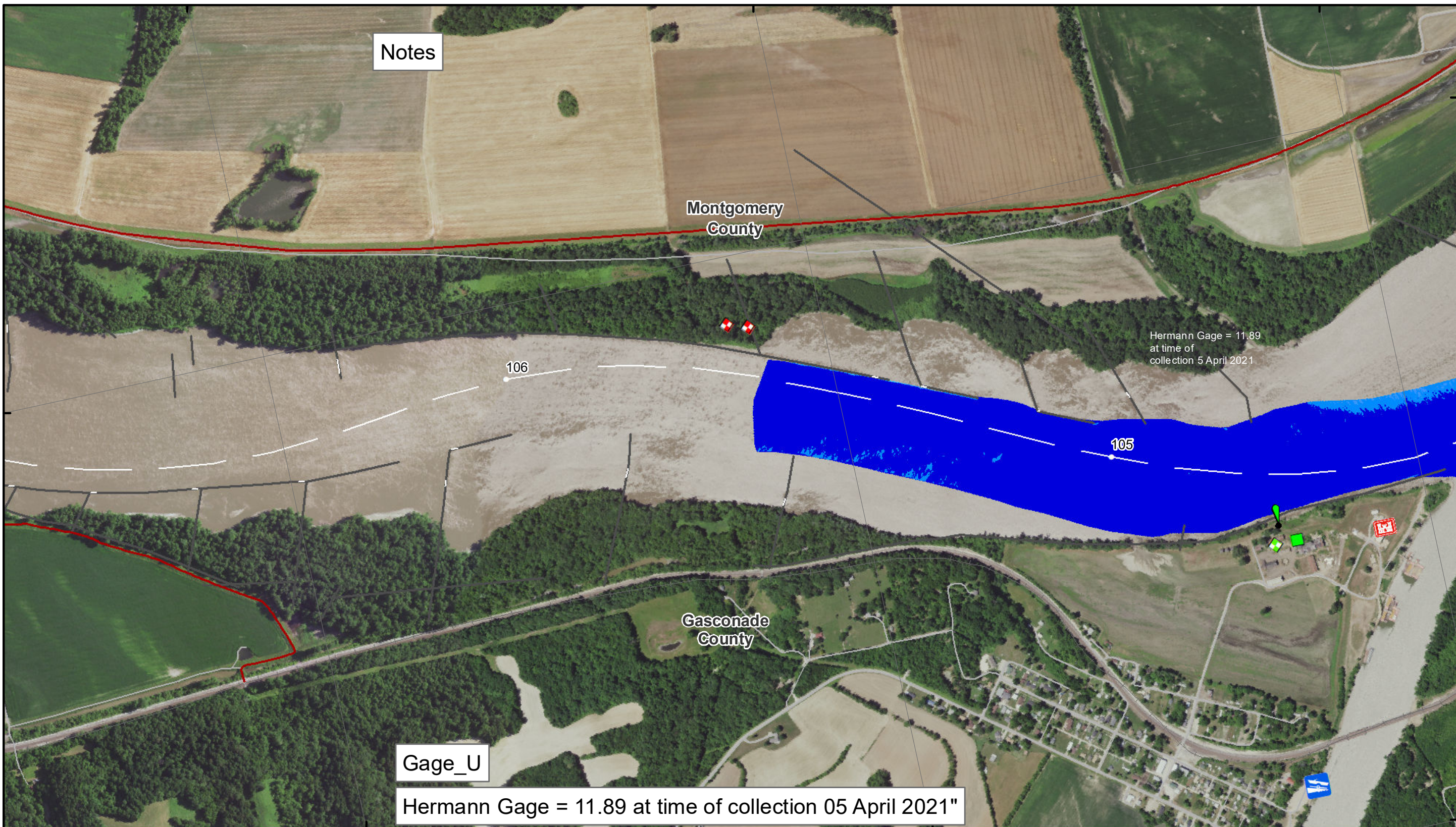
Survey Information
 MO_02_LMR
 MO_02_LMR_20210405_CS_104_5_105_5_SORT
 05 April 2021

Sheet Number
 2 of 46

91°35'W

91°34'W

91°33'W



Notes

Montgomery County

Gasconade County

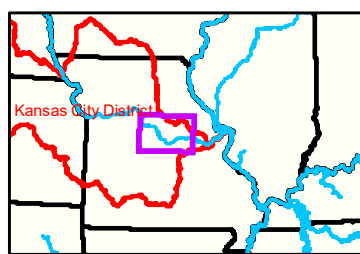
Gage_U

Hermann Gage = 11.89 at time of collection 05 April 2021"

Hermann Gage = 11.89 at time of collection 5 April 2021

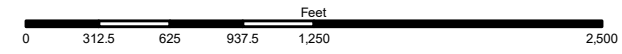
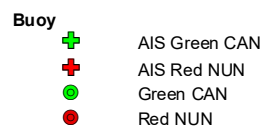
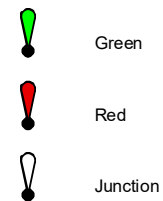
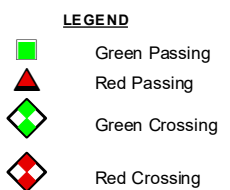
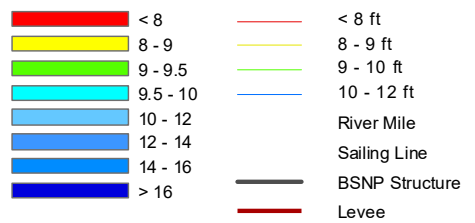
106

105



91°35'W

91°34'W



NOTES:
 Horizontal Coordinate System:
 World Geodetic System of 1984 (WGS84), projected to the Universal Transverse Mercator (UTM) Zone 15 North. Distance units in U.S. Survey Feet
 Vertical Datum:
 Soundings are shown in feet and indicated depths are referenced to water surface at time of collection.
 The information depicted on this map represents the results of a survey conducted on the date indicated and can only be considered to represent the general condition existing at that time.
 The location of navigation aids are based on and provided by the U.S. Coast Guard.



US Army Corps of Engineers
 District: CENWK

Disclaimer: The U.S. Army Corps of Engineers makes no warranty, express or implied, for the use of the data for purposes not intended by the U.S. Army Corps of Engineers. The data is provided for informational purposes only. The U.S. Army Corps of Engineers is not responsible for any errors or omissions in the data. The data is provided as is and the user assumes all liability for its use.

KANSAS CITY DISTRICT MISSOURI RIVER AREA OFFICE	
Submitted By:	MIRAO
Reviewed By:	MIRAO
Checked By:	MIRAO

Survey Information
 MO_02_LMR
 MO_02_LMR_20210405_CS_104_5_105_5_SORT
 05 April 2021

Sheet Number
 3 of 46

38°47'N

38°41'N

38°40'N